

Control Valves

Electrical Two-way/Three-way Control Valves

Flanged ends Ductile Iron PN16/PN25

REEP brand RMU035 model Electrical Two-way/Three-way Control Valves, pressure rating PN 16/25, are extensively applied to HVAC water systems, boiler systems, heat exchange systems or AHU steam systems to regulate the flow rates of fluids in these systems. After the valve's actuator receives a control signal from the BA system, the actuator moves the valve stem to regulate the valve's opening rate, and thus changes the system's flow rate. It is important for hydronic balancing to transport energy and maintain water recycle system.

REEP



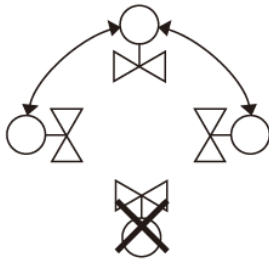
- Fig. RMU035
- DN 50 -400
- Pressure rating PN 16 - 25
- Max. 180 °C
- Equal percentage control characteristic achieves high control precision
- Electronic Presetting function facilitates on-site commission.
- Automatic fault detection and alarm functions
- With V-shaped sealing ring and stainless steel spring compensation function, higher abrasion resistance and longer life
- Flow deviation ±5%

Material Specification

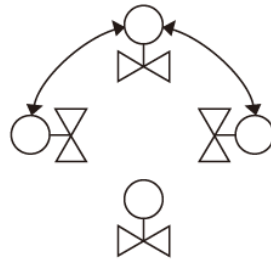
Component	Material	EN and/or (DIN)
Body and bonnet	DI	400-15(GGG40)
Disc	St.St	
Sealing	FKM/PTFE	
Stem	St.St	
Spring	St.St	

Pressure and temperature range

Size	water
DN50 thru DN400	25 bar – 180 °C



Downward Installation Prohibited
(Fluid Medium: Cold/Hot Water)



Installed in Random Angle
(Fluid Medium: Steam)

Dimensions

DN [mm]	PN	L [mm]	H [mm]	Kvs	Stroke [mm]	Actuator Force(N)	Two-way Shut Off ΔP[Kpa]	Three-way Shut Off ΔP[Kpa]
50	25	230	136	31	20	1800	≤1600	≤300
65	25	290	166	50	20	3000	≤1600	≤450
80	25	310	196	80	20	3000	≤1600	≤270
100	25	350	212	125	40	3000	≤1600	≤200
125	25	400	233	200	40	3000	≤1600	≤150
150	25	480	247	300	40	3000	≤1600	≤100
200	25	500	339	520	40	5000	≤1600	≤130
250	25	600	391	750	40	5000	≤1600	≤80
300	25	700	485	1200	100	16000	≤1600	≤250
350	25	788	565	1800	100	16000	≤1600	≤150
400	25	912	615	2200	100	16000	≤1600	≤100

