

Control Valves

Electrical Two-way/Three-way Control Valves

Thread ends SST PN16

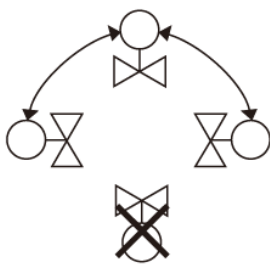
REEP brand RMU030 model Electrical Two-way/Three-way Control Valves, pressure rating PN 16, are extensively applied to HVAC water systems, boiler systems, heat exchange systems or AHU steam systems to regulate the flow rates of fluids in these systems. After the valve's actuator receives a control signal from the BA system, the actuator moves the valve stem to regulate the valve's opening rate, and thus changes the system's flow rate. It is important for hydronic balancing to transport energy and maintain water recycle system.

Material Specification

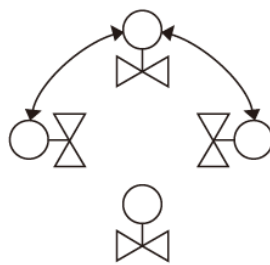
Component	Material	EN and/or (DIN)
Body	St.St	A351 CF8
Bonnet	St.St	A351 CF8
Sealing	PTFE	
Stem	St.St	
Spring	St.St	

Pressure and temperature range

Size	water
DN15 thru DN50	16 bar – 180 °C



Downward Installation Prohibited
(Fluid Medium: Cold/Hot Water)



Installed in Random Angle
(Fluid Medium: Steam)

Dimensions

DN [mm]	PN	L [mm]	H [mm]	Kvs	Stroke [mm]	Actuator Force(N)	Two-way Shut Off ΔP [Kpa]	Three-way Shut Off ΔP [Kpa]
15	16	80	95	1.9	8	500	≤ 400	≤ 350
20	16	80	98	4.4	8	500	≤ 400	≤ 350
25	16	100	101	8.0	13	500	≤ 350	≤ 300
32	16	103	107	10.0	13	1000	≤ 350	≤ 300
40	16	122	113	20.0	20	1000	≤ 250	≤ 250
50	16	138	118	32.0	20	1000	≤ 300	≤ 300

REEP



• Fig. RMU030

- DN 15 -50
- Pressure rating PN 16
- Max. 180 °C
- Equal percentage control characteristic achieves high control precision
- Electronic Presetting function facilitates on-site commission.
- Automatic fault detection and alarm functions
- With V-shaped sealing ring and stainless steel spring compensation function, higher abrasion resistance and longer life
- Flow deviation $\pm 5\%$

